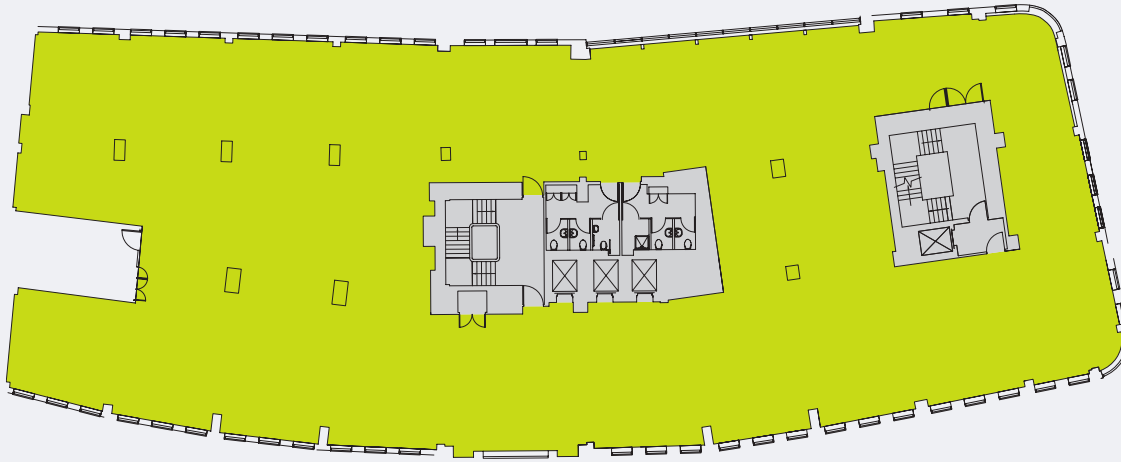


Endeavour House Shaftesbury Avenue

Plans

First Floor

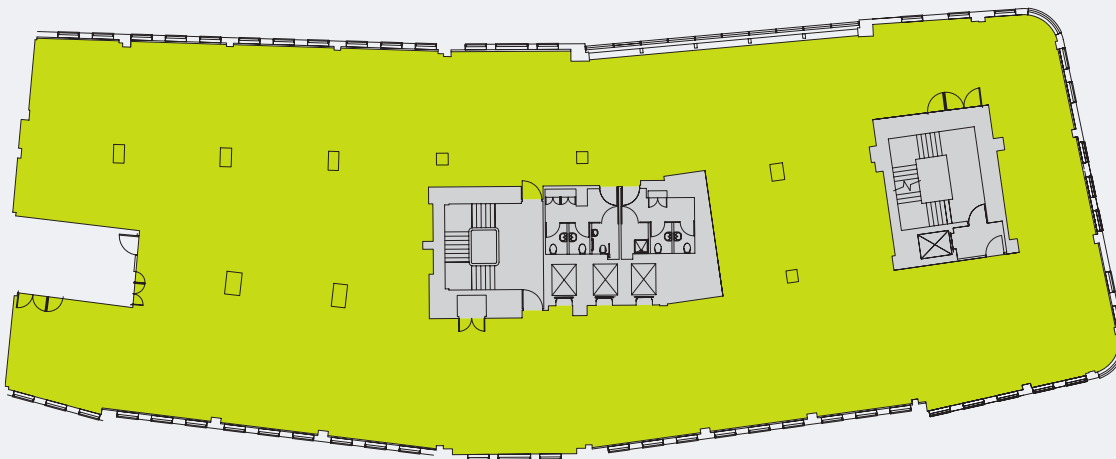
11,590 sq ft/1,077 sq m



Shaftesbury Avenue

Second Floor

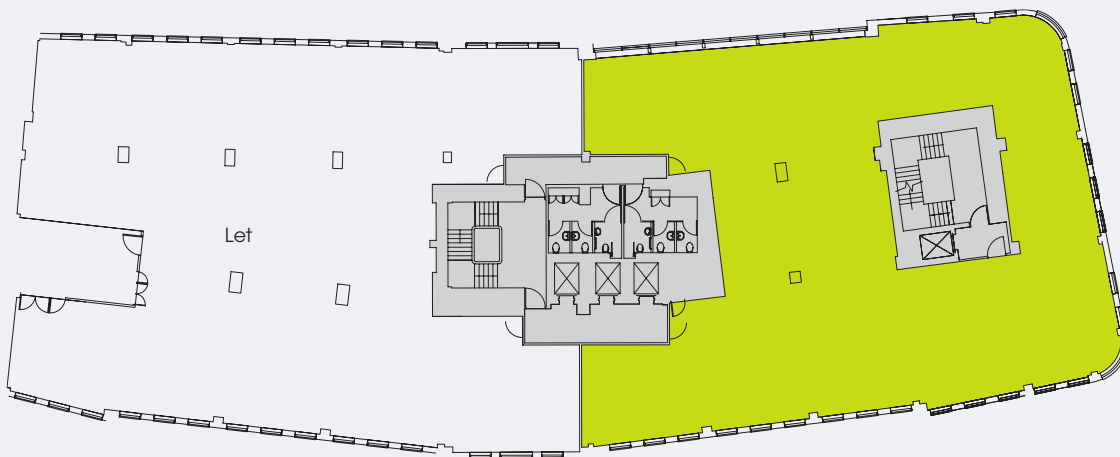
11,239 sq ft/1,044 sq m



Shaftesbury Avenue

Third Floor

4,996 sq ft/464 sq m

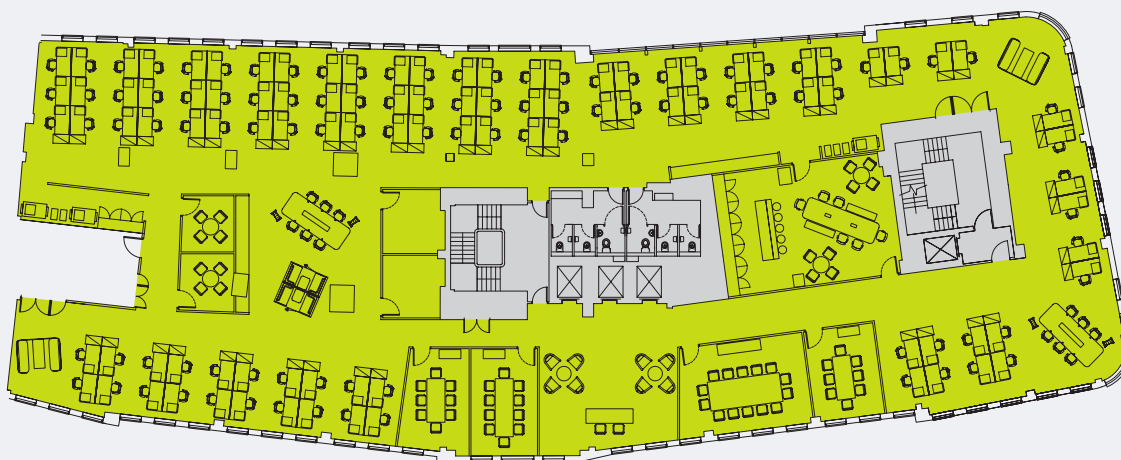


Shaftesbury Avenue

Floor plans are not to scale.
For indicative purposes only.

Key:
● Office
● Core

Typical Floor



Shaffesbury Avenue

Reception	1	Tea Point/Breakout	1	Open-plan Desk	102
14-Person Meeting Room	1	Copy Point	2	Receptionist	2
10-Person Meeting Room	1	Comms	1		
8-Person Meeting Room	2	Post & Store	1	TOTAL HEADCOUNT	104
4-Person Meeting Room	2			(approx 10 sq m per person)	
Quiet Booth	2				
Informal Meeting Area	2				

Typical Floor



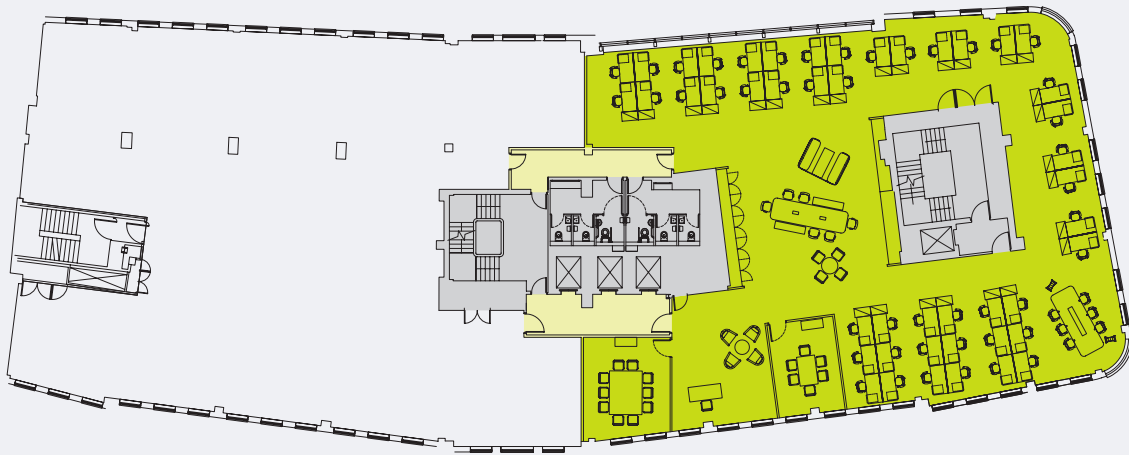
Shaffesbury Avenue

Reception	1	Tea Point/Breakout	1	Open-plan Desk	84
14-Person Meeting Room	1	Coffee Point	1	Touchdown	15
10-Person Meeting Room	1	Copy Point	2	Receptionist	2
8-Person Meeting Room	2	Comms	1	TOTAL HEADCOUNT	101
Quiet Booth	2	Post & Store	1	(approx 11 sq m per person)	
Informal Meeting Area	2				

Space plans are not to scale.
For indicative purposes only.

Key:
● Office
● Core

Part 3rd Floor



Shaftesbury Avenue

Reception	1	Tea Point/Breakout	1	Open-plan Desk	46
10-Person Meeting Room	1	Copy Point	1	Receptionist	1
6-Person Meeting Room	1				
Informal Meeting Area	2				
				TOTAL HEADCOUNT	47
				(approx 10 sq m per person)	

Part 3rd Floor



Shaftesbury Avenue

Reception	1	Tea Point/Breakout	1	Open-plan Desk	36
10-Person Meeting Room	1	Post & Store	1	Touchdown	9
6-Person Meeting Room	2			Receptionist	1
Informal Meeting Area	2				
				TOTAL HEADCOUNT	46
				(approx 10 sq m per person)	

Space plans are not to scale.
For indicative purposes only.

Key:
● Office
● Core

