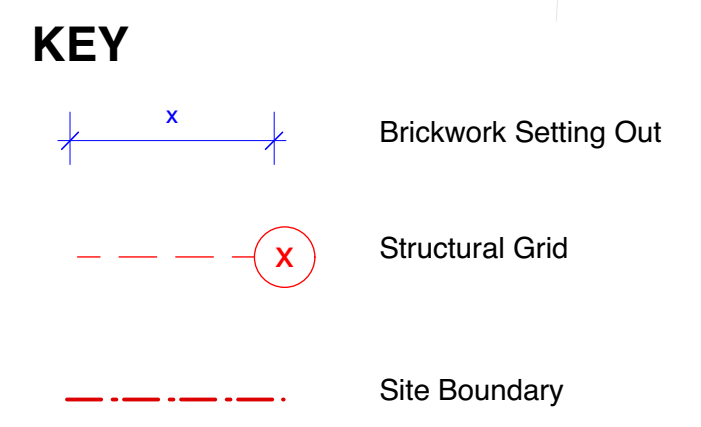
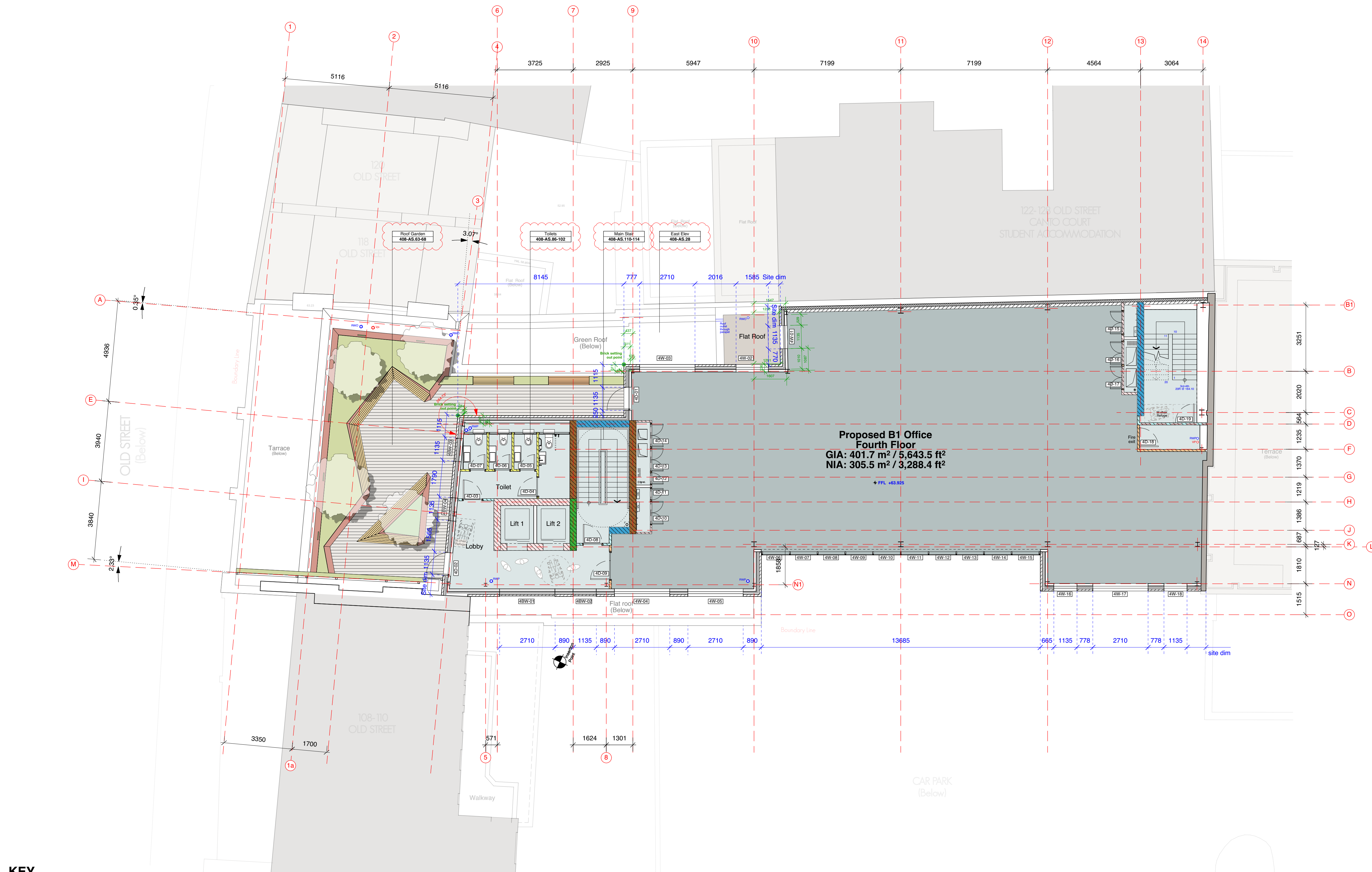


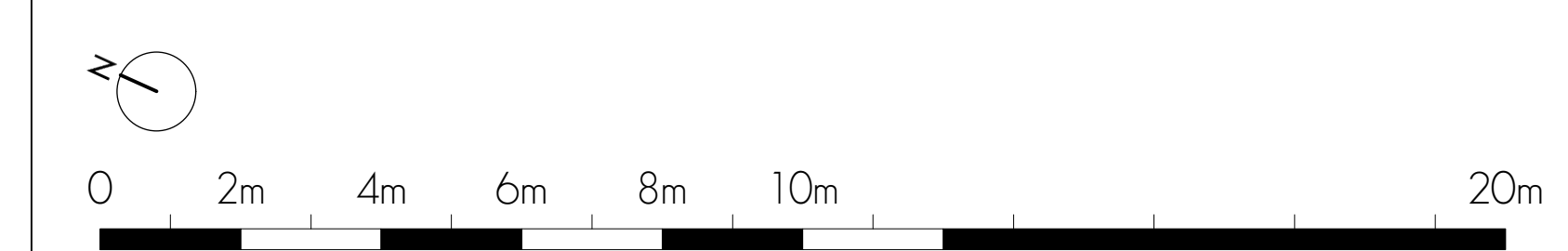
INTERNAL PARTITIONS (To be read alongside detailed drawings)

- PARTITION 1 - STANDARD**
British Gypsum system Ref:A206045
 - 1 layer of 12.5mm Gyproc WallBoard board to each side of 70mm Gyproframe C studs @ 600mm, 25mm Isover Acoustic Partition Roll (APR 1200) in the cavity. Joints taped and filled as per manufacturer's recommendations.
 - See detailed drawings for finishes
 - 3600mm maximum partition height
 - 30 minute fire resistance
 - 42 RwdB sound resistance
- PARTITION 1A - 30m FR**
 - Partition 1 build-up with firestop at partitions head to achieve 30m FR
- PARTITION 2 - 60m FR**
British Gypsum system Ref:A206110
 - 1 layer of 15mm Gyproc Fireline board to each side of 70mm Gyproframe C studs @ 600mm, 25mm Isover Acoustic Partition Roll (APR 1200) in the cavity. Joints taped and filled as per manufacturer's recommendations.
 - See detailed drawings for finishes
 - 3800mm maximum partition height
 - 60 minute fire resistance
 - 43 RwdB sound resistance
- PARTITION 3 - 120m FR**
British Gypsum system Ref:A206111
 - 2 layers of 12.5mm Gyproc Fireline board to each side of 70mm Gyproframe C studs @ 600mm, 25mm Isover Acoustic Partition Roll (APR 1200) in the cavity. Joints taped and filled as per manufacturer's recommendations.
 - See detailed drawings for finishes
 - 4600mm maximum partition height
 - 120 minute fire resistance
 - 49 RwdB sound resistance
- PARTITION 4 - 60m FR**
British Gypsum system Ref:A306010/10
 - 1 layer of 15mm Gyproc FireLine board to the outer side (non-shaft side) of 60mm Gyproframe 1 studs with Gyproc CoreBoard between studs, secured by Gyproframe retaining channel, 25mm Isover Acoustic Partition Roll (APR 1200) in the cavity. Joints taped and filled as per manufacturer's recommendations.
 - See detailed drawings for finishes
 - 4200mm maximum partition height
 - 60 minute fire resistance
 - 42 RwdB sound resistance
- PARTITION 4A - 60m FR**
British Gypsum system based on Ref:A306010/10
 - Partition 4 build-up with the addition of 16mm resilient bars and 1 more layer of 15mm Gyproc Fireline board to match interior lining.
- PARTITION 5 - 120m FR**
British Gypsum system Ref:A306003/023
 - 2 layers of 15mm Gyproc FireLine board to the outer side (non-shaft side) of 60mm Gyproframe 1 studs with Gyproc CoreBoard between studs, secured by Gyproframe retaining channel, 25mm Isover Acoustic Partition Roll (APR 1200) in the cavity. Joints taped and filled as per manufacturer's recommendations.
 - See detailed drawings for finishes
 - 4500mm maximum partition height
 - 60 minute fire resistance
 - 45 RwdB sound resistance
- PARTITION 5A - 120m FR**
British Gypsum system based on Ref:A306003/023
 - Partition 5 build-up with the addition of 16mm resilient bars and 2 more layers of 15mm Gyproc Fireline board to match interior lining.
- PARTITION 6 - 90m FR (60)**
British Gypsum system Ref:A216008
 - 2 layers of 15mm Gyproc Soundblock board to each side of 70mm Gyproframe C studs @ 600mm, 25mm Isover Acoustic Partition Roll (APR 1200) in the cavity. Joints taped and filled as per manufacturer's recommendations.
 - See detailed drawings for finishes
 - 7500mm maximum partition height
 - 90 minute fire resistance
 - 63 RwdB sound resistance
- PARTITION 6A - 90m FR (60)**
British Gypsum system based on Ref:A216008
 - Partition 6 build-up with the addition of 16mm resilient bars inbetween studs and plasterboard boards on the stairwell side.
- PARTITION 7 - 120m FR**
British Gypsum system based on Ref:A216010
 - 2 layers of 15mm Gyproc Fireline board to each side of 70mm Gyproframe C studs @ 600mm, 50mm Isover Acoustic Partition Roll (APR 1200) in the cavity. Joints taped and filled as per manufacturer's recommendations.
 - See detailed drawings for finishes
 - 7500mm maximum partition height
 - 120 minute fire resistance
 - 60 RwdB sound resistance
- PARTITION 7A - 120m FR**
British Gypsum system based on Ref:A216010
 - Partition 7 build-up with the addition of 16mm resilient bars inbetween studs and plasterboard boards on the stairwell side.
- PARTITION 8 - 90m FR**
British Gypsum system Ref:A206029 (152mm)
 - 2 layers of 15mm Gyproc Fireline board to each side of 90mm Gyproframe C studs @ 600mm, 25mm Isover Acoustic Partition Roll (APR 1200) in the cavity. Joints taped and filled as per manufacturer's recommendations.
 - See detailed drawings for finishes
 - 4600mm maximum partition height
 - 90 minute fire resistance (30minutes required but no partitions wide enough comply)
 - 49 RwdB sound resistance
- PARTITION 9**
 - 140mm thick 7N/mm² fair faced blockwork. Blockwork wall with 15mm Dab & Dab adhesive, 12.5mm British gypsum plasterboard with taped staggered joints, filled and sanded and finished with 3mm thistle skim and paint to Dulux Trade Diamond Matt water based emulsion, Colour: pure white, RAL 9016 unless otherwise specified.

- GENERAL NOTES:**
- Wet rooms to have moisture resistant plasterboard variant (keeping all other properties).
 - Allow for 25mm head deflection following manufacturer's recommended details (either parallel or perpendicular to slab metal deck profile)
 - Partition head details with Firestop to the underside of the metal deck to manufacturer's typical head detail to beams to guarantee the desired fire rating.



PROPOSED FOURTH FLOOR PLAN



FOR CONSTRUCTION

PROJECT 112-116 OLD STREET LONDON EC1V			DRAWING TITLE PROPOSED FOURTH FLOOR PLAN							
C1	01/03/18	Issued for Construction	CLIENT COASTVIEW ESTATE LIMITED							
rev.	date	notes	SCALE	1:100 @ A1	DATE	January 2017	DWG BY	PG	REV.	C1
This drawing is the copyright of gpad ltd . Not to be reproduced, retained or disclosed to any unauthorised person either wholly or in part without written permission. Do not scale the drawing. All indicated dimensions to be checked and verified on site by the contractor before commencement of any fabrication drawings or work whatsoever on site. Report any discrepancies to the Architect immediately. Drawings to be read in conjunction with relevant drawings and specification.			CHCKD. DS	DWG NO. 408-GA.06	© gpad London Ltd.					
			ARCHITECTURE & INTERIOR DESIGN gpad			T: 020 7549 2133 F: 020 7549 2144 E: info@gpadlondonltd.com W: www.gpadlondonltd.com				
			Second Floor 130 Old Street Clerkenwell London EC1V 3BD							